



PRODUCT OVERVIEW

# OCEAN MASTER M1 CLASSIC

The Ocean Master M1 Classic parasol is the culmination of durable shade engineering, stylish profiles and functional shade design. Manufactured to marine specifications, all Ocean Master M1 parasols feature 100% replaceable parts for easy service and a 15/5-year warranty. Classic beauty. Classic Tuuci®.

FEATURES



Patented Independent Bracket Hub System



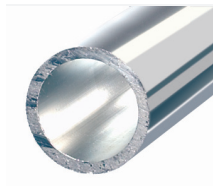
Auto-LOC Marine Pulley Lift



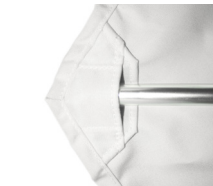
Manual Lift w/ Stainless Steel Security Pin



Reinforced Strut Joint Connector



Armor Wall Mast



Ballistic-Reinforced Canopy Construction



Easy Drive Crank Lift System



Venice Aluminum Finial



Security Sleeve

FINISH OPTIONS

FLAGSHIP



Polished Titanium

POWDER COAT



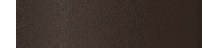
Black Sea

PLANTATION ALUMA-TEAK



Java

Graphite



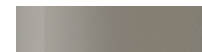
Espresso

Natural



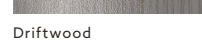
Weathered

Night Fog



Oyster

Driftwood



Cypress

Sandbar



Glacier White

Aspen



Silver Sand

SHAPE & SIZES



Square

ft.	/	m.
5.5'	/	1.65m
6.5'	/	2.0m
7.5'	/	2.25m
8.5'	/	2.6m

Square Auto-Scope

ft.	/	m.
10.0'	/	3.0m



Octagon

ft.	/	m.
6.0'	/	1.8m
7.5'	/	2.25m
9.0'	/	2.75m
10.5'	/	3.2m
11.5'	/	3.6m

Octagon Auto-Scope

ft.	/	m.
13.0'	/	4.0m



Hexagon

ft.	/	m.
7.0'	/	2.15m
8.5'	/	2.6m
10.0'	/	3.0m
11'	/	3.4m



Rectangle

ft.	/	m.
5.0' x 8.0'	/	1.5m x 2.45m
6.0' x 9.0'	/	1.8m x 2.75m

Rectangle Auto-Scope

ft.	/	m.
8.0' x 12.0'	/	2.4m x 3.65m